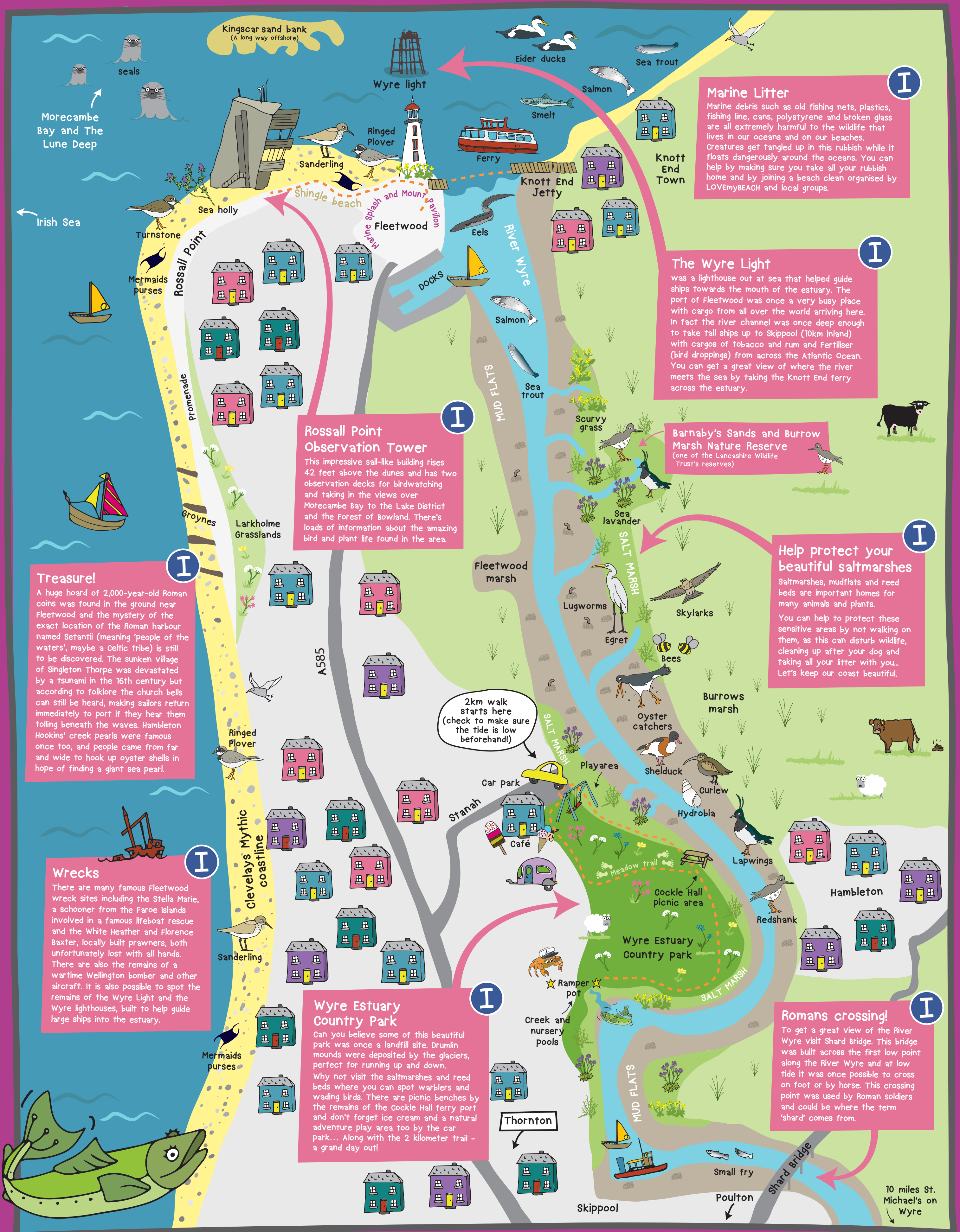


# The Little Cucumber Fish of Wyre



## Marine Litter

Marine debris such as old fishing nets, plastics, fishing line, cans, polystyrene and broken glass are all extremely harmful to the wildlife that lives in our oceans and on our beaches. Creatures get tangled up in this rubbish while it floats dangerously around the oceans. You can help by making sure you take all your rubbish home and by joining a beach clean organised by LOVEmyBEACH and local groups.

## The Wyre Light

was a lighthouse out at sea that helped guide ships towards the mouth of the estuary. The port of Fleetwood was once a very busy place with cargo from all over the world arriving here. In fact the river channel was once deep enough to take tall ships up to Skippool (10km inland) with cargos of tobacco and rum and Fertiliser (bird droppings) from across the Atlantic Ocean. You can get a great view of where the river meets the sea by taking the Knott End ferry across the estuary.

## Barnaby's Sands and Burrow Marsh Nature Reserve

(one of the Lancashire Wildlife Trust's reserves)

## Help protect your beautiful saltmarshes

Saltmarshes, mudflats and reed beds are important homes for many animals and plants. You can help to protect these sensitive areas by not walking on them, as this can disturb wildlife, cleaning up after your dog and taking all your litter with you... Let's keep our coast beautiful.

## Treasure!

A huge hoard of 2,000-year-old Roman coins was found in the ground near Fleetwood and the mystery of the exact location of the Roman harbour named Setantii (meaning 'people of the waters', maybe a Celtic tribe) is still to be discovered. The sunken village of Singleton Thorpe was devastated by a tsunami in the 16th century but according to folklore the church bells can still be heard, making sailors return immediately to port if they hear them tolling beneath the waves. Hambleton Hookins' creek pearls were famous once too, and people came from far and wide to hook up oyster shells in hope of finding a giant sea pearl.

## Wrecks

There are many famous Fleetwood wreck sites including the Stella Marie, a schooner from the Faroe Islands involved in a famous lifeboat rescue and the White Heather and Florence Baxter, locally built prawners, both unfortunately lost with all hands. There are also the remains of a wartime Wellington bomber and other aircraft. It is also possible to spot the remains of the Wyre Light and the Wyre lighthouses, built to help guide large ships into the estuary.

## Rossall Point Observation Tower

This impressive sail-like building rises 42 feet above the dunes and has two observation decks for birdwatching and taking in the views over Morecambe Bay to the Lake District and the Forest of Bowland. There's loads of information about the amazing bird and plant life found in the area.

## Wyre Estuary Country Park

Can you believe some of this beautiful park was once a landfill site. Drumlins were deposited by the glaciers, perfect for running up and down. Why not visit the saltmarshes and reed beds where you can spot warblers and wading birds. There are picnic benches by the remains of the Cockle Hall ferry port and don't forget ice cream and a natural adventure play area too by the car park... Along with the 2 kilometer trail - a grand day out!

## Romans crossing!

To get a great view of the River Wyre visit Shard Bridge. This bridge was built across the first low point along the River Wyre and at low tide it was once possible to cross on foot or by horse. This crossing point was used by Roman soldiers and could be where the term 'shard' comes from.

Supported by:

## Disclaimer

Tale trails are intended as a guide only. Whilst care has been taken to include routes that are on rights of way, paths or access areas where permission exists, inclusion of a route is no evidence of a current right of way or permissive access. Be aware of fast moving tides and sinking sand. Please avoid walking on the sensitive mud flats and salt marshes. Please follow the countryside code and leave only footprints.

Discover more at [www.taltrails.co.uk](http://www.taltrails.co.uk)

Copyright © 2020 The Wildlife Trust for Lancashire, Manchester and N. Merseyside

Map illustration and design by Custard Graphic Design  
[www.custard-graphic-design.co.uk](http://www.custard-graphic-design.co.uk)



wyre council



Tale trails  
Lancashire, Manchester & N Merseyside