

## Where and when

Our Beach School programme takes place on the beautiful beaches of the Fylde coast and runs term-time throughout the year. Choose from one session for a half-day visit, or a combination of any two sessions to create a full day visit with your class.

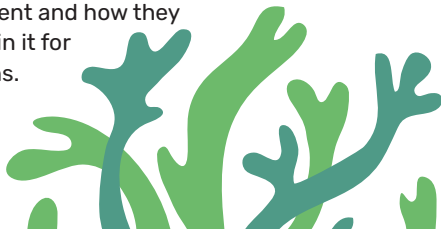
## Age Range

Beach School can be tailored to suit students of any age! From pre-school and Early Years Foundation Stage (EYFS) up to A-Level and university students. Activities are linked to the National Curriculum and can enhance classroom learning.



## Aims

Nationally accredited and acknowledged Beach School sessions are delivered by fully qualified and experienced staff. Through a variety of games and activities, Beach School aims to educate children and young people about their local coastal environment and how they can help to sustain it for future generations.



We recognise the vital importance of promoting and understanding the natural world and believe our Beach School programme is an ideal platform for delivery.

If you're interested in spending time at the seaside, learning about our amazing coastline with us, please get in touch. Our trained Beach School officers have extensive knowledge and experience to tailor the sessions around your needs.

### Contact

Amy Pennington  
apennington@lanctswt.org.uk



Fylde Sand Dunes



scan for more information



# Beach School



Blackpool Council



Beach School is an unforgettable way for children and young people to immerse themselves in the wonders of the UK's seas & beaches.



We aim to improve student knowledge about their local coastal environment by connecting them with nature; opening their eyes to this amazing habitat and inspiring them to care for our coasts.



## The topics explored during beach school sessions may include:

### Living things and their habitats

Explore the coastal habitats and wildlife that inhabit them. Go beachcombing on the strandline, minibeast hunting in the sand dunes and mud dipping in the saltmarsh. Investigate things that are living, once lived in or dead. Learn how the animals are adapted to living in the different environments.

### Geographical features of a coastline

Look at the coastal area and discuss what you can see. Are these things human or physical/natural or man-made? Have they always been there? Do they change with time? Learn about coastal processes.

### Orienteering

Learn how to use a compass to find north, east, south, and west. Learn how to use a map to navigate your way around the local area. What might you find?

### Beach safety

Learn how to act responsibly at the beach. Learn about tides and waves, how to stay safe at the beach, and know your beach flags.

### Pressures on the marine environment

Play our exciting games and activities to learn about marine pollution (including plastics!), over-fishing, and climate change. How are these pressures affecting our earth? How can we have a positive impact on our coast?

### Understanding sea defences

What's the difference between a hard or soft defence? Discuss the different types of coastal defence and encourage debate about their effectiveness. Become a coastal engineer and create your own coastal defence project.

### Practical conservation

Give back to the environment by positively impacting the coast. Go on a beach clean to remove dangerous litter from the beach, or take part in sand dune conservation (season dependent) such as planting dune grasses or removing invasive non-native species. This topic can be used towards Duke of Edinburgh or John Muir Awards.

### Environmental art

Collect natural materials and use these to create a sandy masterpiece. Students can learn more about marine animals by creating their own life-size UK coastal species, or it can be used to learn about artists such as Andy Goldsworthy.

### Survival Skills

Oh no! You're stranded on a desert island and must figure out a way to survive. Look for natural materials to help you. Build a shelter to protect you from the storm. Discuss what things can be eaten and what should be avoided. Discuss how animals who live in this environment are adapted to living here, and how could we adapt to survive.

### Surveying

Use of a range of different survey techniques to observe, identify and record coastal species or features. Surveys include: Shoresearch (intertidal marine flora & fauna), coastal vegetation, invertebrates, or sand dune succession.

Within these activities children will also develop primary skills in team working, citizenship, confidence in an outdoor setting, emotional intelligence, social skills, health and safety initiatives, sustainability, appreciation and understanding of the coast.

